

## Archiving

### Citizens' Reg

- will leave current files for next admin
- nothing to go to Archives

### Natural Res

- 1984 here to send (see attached list) (one box behind Xerox)
- 1985 + 1986 to go (merge with 1984 first)

### Legal Counsel (copy records)

- 2 boxes to go

### Affirmative Action ?

### Boards & Commissions

nothing to go to Archives - Senate + Secy of State are offices of record

### Central Files

- 1-1-84
- 1984 thru 1-9-87 to go (purge 85 + 86 then add to 1984 which is in <sup>5</sup> boxes behind Xerox)

### Proclamations

# Natural Resources

Item	Boxes		Jan 1 1984	Jan 9, 1987
1	CTN	CORRESPONDENCE		
		Inventory attached		

Carton 1

U.S. Army Corps of Engineers, November + December 1984

U.S. Army Corps of Engineers, September + October 1984

July + August 1984

May + June 1984

March + April 1984

January + February 1984

Energy, Department of, 1984

Land Conservation and Development Commission, 1984

Lands, Division of, 1984

Parks and Recreation Division, 1984

Public Utility Commission, 1984

Water Resources Department, 1984

Central Files Jan 1 1984 thru Jan 9 1987

Box 1

- 101-1.4 Governor's Special Committees / Task Forces (A)
- 101-1.4 Affirmative Action
- 101-1.4 Citizen's Representative  
Listening Post  
Nursing Home Ombudsman  
Juvenile Services Commission
- 101-2 Secretary of State
- 101-4 Department of Education
- 101-5 Bureau of Labor
- 101-6 Treasury Department
- 105 Special Agents / Commissions
- 105 Executive Appointments
- 105 Boards and Commissions
- 111 State Programs, General
- 111-1 Department of Commerce
- 111-2 Economic Development Dept.
- 111-4 Worker's Compensation
- 111-5 Dept of Veterans Affairs
- 111-6 Liquor Control Commission
- 111-7 Racing Commission
- 111-8 Fair Commission (B+C)
- 111-9 Public Utility Commission (B+C)
- 112-1 Dept of Human Resources & Divisions



113-6 Dept. of Land Conservation + Development (B+C)

113-7 Dept. of Water Resources

113-8 Dept. of Geology + Mineral Industries (B+C)

113-9 Marine Board (B+C)

113-10 Dept of Energy

113-11 Dept of Agriculture

114-1 Dept of Transportation + Divisions

115-1 Military Dept

115-1 Camp Rilea

115-2 Board on Police Standards + Training (B+C)

115-3 Dept of State Police

116 Education Programs

116-1 Dept of Higher Education

117-1 Public Employers' Retirement System

117-4.1 State Buildings / Grounds

117-4.2 Contracts

117-4.3 State Vehicles

117-5.2 Emergency Services - Executive Dept.

117-5.4 Personnel Division - Executive Dept.

204 Banking

206 Bonds

207 Budgets

207-1 Biennial Budget

207-2 Emergency Bond

210 Taxes

210-1 Income Taxes

210-2 Property Taxes

## Box 2

- 210-3 Timber Tax
- 210-4 Exemptions, Taxes
- 210-5 Inheritance/ Gift Tax
- 210-6 Motor Vehicle
- 210-6 Gasoline
- 210-7 Sales Tax
- 210-8 Refunds
- 210-8 Renter
- 215-1 Grants - PNRS
- 220-1 School Finance
- 225 Insurance
- 302-1 Immitations
- 302-7 Conferences
- 302-8 Fairs / Festivals
- 303-2 Television
- 303-4 Magazines
- 320-3 Complaints
- 410-3 Wage and Salary
- 410-4 Supplemental Compensation
- 410-6 Grievances
- 410-7 Unions
- 420 Employment
- 420-1 Unemployment

- 425-1 Unemployment Claims
- 425-4 Workmen's Compensation
- 430 Inspections - OSHA/WCB
- 510 Boy Scouts/Scouting
- 520 Corporations + Businesses
- 610 International
- 610 Consuls
- 610 Governor. Hu King's Oregon Visit - November 1984
- 620 Balanced Budget
- 620-1 Executive Office of the President
- 620-1 President / Vice President
- 620-2 Legislative
  - 620-2.1 Senate Bills
  - 620-2.2 House Bills
- 620-4 Arts - Federal
- 620-4 JTPA
- 620-6 Administrative
  - 620-6.1 NGA
  - 620-6.1 International Trade
  - 620-6.2 WGA Conference
  - 620-6.3 RGA Conference
- 620-7 Agriculture
- 620-7 Forest Services
- 620-7 Army / Corps of Engineers
- 620-7 Commerce

620-7 Energy

620-7 BPA

620-7 Defense

## Box 3

- 620-3 Congressional Delegation
- 620-7 Labor
- 620-7 State
- 620-7 Transportation (Coast Guard)
- 620-7 Environmental Research & Development
- 620-7 Bureau of Reclamation
- 620-7 IRS
- 620-7 Treasury
- 620-8 Independent Agencies
- 620-7 Housing + Urban Development out of order
- 620-7 Health + Human Services
- 620-7 Interior
- 620-7 BLM
- 620-7 Justice
- 620-7 Energy Regulatory Commission
- 620-8 Environmental Protection Agency
- 620-8 General Services Administration
- 620-8 Interstate Commerce Commission
- 620-8 Small Business Administration
- 620-8 Veteran's Administration
- 630 Regional
- 630 Western States Water Council
- 630 WICHE



650-2 Legislative/Regulatory

650-2.2 Proposed

Box 4

- 650-3 Judicial
- 650-3.1 Justice System
- 650-3.1 Sentences (A)
- 650-3.1 Complaints
- 650-3.2 Statutes
- 650-3.2 Gun Control
- 650-3.3 Courts
- 650-3.5.3 Facilities
- 650-3.5.3 Overcrowding
- 650-3.5.4 Community Corrections
- 660 County, Tri-County
- 670 Mayors
- 670 City, City Managers
- 680 Indian Affairs
- 710-2 Republican Political Matters
- 720-4 National Candidates
- 730-3 Statewide Elections
- 730-1 Issues
- 730-2 Campaigns
- 730-3 Elections
- 810 Area Development (State of Oregon)
- 810-1 Northern
- 810-2 Eastern

- 810-4 Oregon Coastal Zone Management Assoc.
- 810-5 Statewide
- 813 Land Use
- 813-1 Zoning
- 813-5 Forest Land Roads
- 814 Permits + Licenses
- 815-1 Utility (A)
- 815-1 Pipeline Rates
- 815-1 PGE
- 815-1 PNB
- 815-2 Carriers
- 816 Disaster Control
- 816 Floods
- 820-1 Site Selection, Relocation
- 821 Small Business
- 821(A) Oregon Development Corp.
- 825 Trades
- 825-1 Building/Housing
- 825-1 Codes
- 825-2 Agriculture
- 825-2 Supply Mgmt
- 825-3 Lumber/Logging
- 825-4 Mining
- 825-6 Fisheries Management
- 825-6.1 Commercial Fishing

## Box 5

- 845 Ports
- 845-1 Port of Portland
- 845-2 Port of Coos Bay
- 845-3 Longue Point
- 902 Research + Planning
- 903-1 Maintenance
- 903-2 Safety
  - 903-2.2 Markers/Signs
  - 903-2.4 Speeding
  - 903-2.5 Drunk Driving
  - 903-2.6 Auto/Airbags, Seatbelts
- 903-3 I-5
- 903-3(A) Freeway
- 903-4 Highways
- 903-5 Streets/Roads
- 905 Airports
- 906 Bridges
- 907 Waterways
  - 907-1.2 Navigable Waters
- 908 Railways
- 909 Other Transportation Modes
  - 909-1 Tri-Met
  - 909-3 Aircraft/Airlines

- 1010-1 Medicare (A) / Health Care
- 1010-2 Hospitals
- 1010-3 Nursing Homes
- 1010-5 Drugs
- 1010-5.1 Alcohol
- 1010-5.2 Marijuana
- 1010-6.1 Mental
- 1010-7 Mental Health
- 1010-7.3 Patient Letters
- 1010-8 Abortion
- 1010-12 Nutrition
- 1020 Education
- 1020-1 Programs
- 1020-1 Gifted & Talented
- 1020-2 Rehabilitation
- 1020-3 Funds / Scholarships
- 1030 Welfare
- 1030-1 Senior Citizens / Elderly
- 1030-1.2 Foster Home Care
- 1030-1.3 Aged + Low Income
- 1030-1.4 Project Independence
- 1030-2 Child Care
- 1030-2.2 Custody
- 1030-2.3 Adoption

- 1030-2.5.1 Migrant Indian Coalition
- 1030-2.6 Child Support
- 1030-3 Youth
- 1030-6 Veterans - Loans - Pensions
- 1030-7 Complaints
- 1110 Environment
- 1110 Hazardous/Waste materials/Pesticides/Herbicides
- 1120-1 Air - Field Burning - Backyard Burning
- 1120-2 Water
- 1130 Water Resources



November 15, 1989

Mary Beth Herkert  
c/o STATE ARCHIVES  
1005 Broadway, N.E.  
Salem, Oregon 97310

Dear Mary Beth,

Please find attached a copy of the Index for Governor Atiyeh's Archive Files. I apologize for the delay in getting this to you. It is a little difficult for me as I have just recently taken this position.

I certainly hope this is the answer to your question, if not let me know and I will again make some telephone calls.

Sincerely,

Rusanne Haertl

Master

INDEX

100	ADMINISTRATION
200	FINANCIAL MATTERS
300	PUBLIC INFORMATION
400	LABOR MARKET
500	ORGANIZATIONS
600	GOVERNMENTAL RELATIONS
700	POLITICAL MATTERS
800	ECONOMIC DEVELOPMENT
900	TRANSPORTATION
1000	HEALTH, EDUCATION AND WELFARE
1100	ECOLOGY/ENERGY
1500	GENERAL REFERENCE

100 ADMINISTRATION

- 101                    Organization of Oregon Government
  - 101-1                Governor's Office
    - Forms Control/Paperwork Management
      - 101-1.1             Records Management
        - 101-1.1.1           Supplies
        - 101-1.1.2           Office Equipment
          - Telephone
        - 101-1.1.3           Purchase Orders/Contracts
        - 101-1.1.4           Inventory
        - 101-1.1.5           Records Control
        - 101-1.1.6           Transmittal List
      - 101-1.2             Staff (Governor's)
        - 101-1.2.1           Resumes
        - 101-1.2.2           Governor's Personal File
          - Addresses
      - 101-1.3             Policies/Procedures
        - Blood Drawing
        - Executive Orders, Correspondence regarding
        - Memos to Agency/Department Heads
      - 101-1.4             Governor's Special Committees/Task Forces
        - Affirmative Action
        - Economic Recovery Council
        - Internship Program
        - Juvenile Services Commission
        - Listening Post
      - 101-1.4             Nursing Home Ombudsman
      - Citizens' Representative

101-2                Secretary of State  
                              Notary Public

101-3                Department of Justice  
                              Attorney General's Opinions

101-4                Department of Education

101-5                Bureau of Labor

101-6                Treasury Department

105                  Boards and Commissions  
                              Executive Appointments  
                              Special Agents/Commissions

111                  State Programs, General

111-1                Department of Commerce

111-1.1              Banking Division

111-1.2              Corporation Division

111-1.3              Insurance Division

111-1.4              Real Estate Division

111-1.5              Fire Marshal Division

111-1.6              Consumer Service Division

111.1.7              Housing Division

111-1.8              Building Codes Division

111-2                Department of Economic Development

111-4                Workers' Compensation Department

111-5                Department of Veterans' Affairs

111-6                Liquor Control Commissioner

111-7                Racing Commission

111-8                Fair Commission

111-9                Public Utility Commission

- 112                    Human Resources Programs
  - 112-1                    Department of Human Resources
    - 112-1.1                    Health Division
    - 112-1.2                    Vocational Rehabilitation Division
    - 112-1.3                    Mental Health Division
      - Dammasch
      - Eastern Oregon State Hospital
    - 112-1.4                    Corrections Division
    - 112-1.5                    Adult and Family Services
    - 112-1.6                    Childrens' Services Division
    - 112-1.7                    Employment Division
    - 112-1.8                    Senior Services Division
  - 112-2                    State Health Planning and Development Agency
- 113                    Environment, Natural Resources and Energy
  - 113-1                    Dept. of Environmental Quality
  - 113-2                    Forestry Department
  - 113-3                    Dept. of Fish and Wildlife
  - 113-4                    Division of State Lands
  - 113-5                    State Land Board
  - 113-6                    Dept. of Land Conservation and Development
  - 113-7                    Dept. of Water Resources
  - 113-8                    Dept. of Geology and Mineral Industries
  - 113-9                    Marine Board
  - 113-10                    Dept. of Energy
    - 113-10.1                    Energy Facility Siting Council
  - 113-11                    Dept. of Agriculture

- 114                    Transportation Services
  - 114-1                    Department of Transportation
    - 114-1.1                    Public Transit Division
    - 114-1.2                    Motor Vehicles Division
    - 114-1.3                    Highway Division
    - 114-1.3.1                    State Parks
- 115                    Public Safety
  - 115-1                    Military Department
    - Camp Rilea
  - 115-2                    Board of Police Standards and Training
  - 115-3                    Dept. of State Police
  - 115-4                    Parole Board
  - 115-5                    Traffic Safety Commission
  - 115-6                    Law Enforcement Council
- 116                    Education Programs/Opportunities
  - 116-1                    Dept. of Higher Education
    - Eastern Oregon State College
    - Health Sciences Center
    - Oregon State University
    - University of Oregon
  - 116-2                    Educational Coordinating Commission
  - 116-3                    State Library
  - 116-4                    Oregon Arts Commission
- 117                    Administrative and Support Services
  - 117-1                    Public Employes' Retirement System
  - 117-2                    Employment Relations Board
  - 117-3                    Department of Revenue
  - 117-4                    Department of General Services



- 117-4.1 State Buildings/Grounds
- 117-4.2 State Equipment/Supplies
  - Contracts/Bids
- 117-4.3 State Vehicles
  - 117-4.3.1 Policy/Procedures
  - 117-4.3.2 Governor's Car
- 117-4.4 State Employees' Parking
- 117-5 Executive Department
  - 117-5.1 Intergovernmental Relations Division
  - 117-5.2 Emergency Services
  - 117-5.4 Personnel Division
- Executive Service/Unclassified Service

200 FINANCIAL MATTERS

- 201 Policies and Procedures
- 202 Audits
- 204 Banking
- 205 Bankruptcy
- 206 Bonds/Annuities
- 207 Budget
  - 207-1 Biennial
  - 207-2 Emergency Board
- 208 Funds
  - 208-1 General
  - 208-2 Revenue Sharing
- 210 Taxes
  - 210-1 Income
  - 210-2 Property

210-3	Timber Tax/Small Tract Optional Tax
210-4	Exemptions
210-5	Inheritance/Gift
210-6	Motor Vehicle
	Gasoline
210-7	Sales
210-8	Refunds
	Property/Homeowner
	Renter
	Weatherization
215	Federal Aid
215-1	Grants
220	Revenue
220-1	School Finance
225	Insurance
225-1	No-fault Insurance/Mandatory
225-2	Rates/Premiums

### 300 PUBLIC INFORMATION

302	Public Affairs
302-1	Invitations
302-1.1	Accepted (filed monthly)
302-1.2	Declined (filed monthly)
302-1.3	Invitations Extended
302-2	Speeches, statements
302-3	Special Events
302-3.1	1984 Olympics
302-4	Proclamations

- 302-5            **Visitors**
- 302-6            **Meetings with Governor**
  - In Office**
  - Out of Office**
- 302-7            **Conferences**
- 302-8            **Fairs/Festivals**
- 303              **Media**
  - 303-1            **Newspaper**
    - 303-1.1           **Editorial Letters**
  - 303-2            **TV**
  - 303-3            **Radio**
  - 303-4            **Magazine**
  - 303-5            **Films**
- 304              **Publications**
- 305              **Promotion, Publicity**
- 306              **Community Relations**
  - 306-1            **Club Memberships**
  - 306-3            **Art/Artist of the Month**
- 307              **Civic Drives**
  - Cancer Crusade**
  - United Way**
  - U.S. Savings Bonds**
- 310              **Tourism**
- 320              **Public Information**
  - 320-1            **Courtesy Letters (Birthday, Christmas, Thank-you,  
filed by month)**
    - 320-1.1           **Congratulations**
  - 320-2            **Commendation Letters**

- 320-3 Complaint Letters
- 320-4 Nominations for Awards/Endorsements
- 320-5 Support Letters
- 320-6 Youth Letters

410 LABOR MARKET

- 410 Personnel
  - 410-1 Employment Procedures
    - 410-1.1 Applications
      - Secretarial
    - 410-1.2 Resumes
    - 410-1.3 Recommendations
  - 410-2 Employe Services (medical,safety)
  - 410-3 Wage, Salary/Hours
  - 410-4 Supplemental Compensation (Fringe Benefits)
  - 410-5 Personnel Records
    - 410-5.1 Commendation Letters
    - 410-5.2 Retirement Letters
  - 410-6 Labor Negotiations
    - Grievances
  - 410-7 Unions
- 415 Discrimination
  - 415-1 Race
  - 415-2 Sex
  - 415-4 Affirmative Action
  - 415-5 Equal Rights (ERA)

- 420            Employment
  - 420-1            Unemployment
  - 420-2            Programs/Projects (WIN, Job Corps)
  - 420-3            Child/Youth Labor

- 425            Claims
  - 425-1            Unemployment
  - 425-2            Insurance
  - 425-3            SAIF
  - 425-4            Workers' Compensation

- 430            Inspections OSHA/WCB

#### 500 ORGANIZATIONS

- 510            Organizations/Associations/Committees  
(Chamber of Commerce, League of Women Voters)
  - Boy/Girls Scouts

- 520            Corporations, Businesses
  - SAIF

- 530            Consultants, Attorneys, Contractors, Architects

- 540            Educational Institutions other than State Schools  
(Museums, Libraries)

#### 600 GOVERNMENTAL RELATIONS

- 610            International
  - Indochinese Refugees/Cambodians
  - Consuls/Embassies

620

Federal

Balanced Budget

620-1 Executive Office of President and Vice President

620-2 Legislative (Correspondence to and from Representatives  
and Senators, other states, Legislative Committees)

620-2.1 Senate Bills

620-2.2 House Bills

620-3 Oregon Congressional Delegations

620-4 Acts

Job Training Partnership Act

Comprehensive Employment & Training Act (CETA)

620-5 Judicial

620-6 Administrative

620-6.1 National Governors' Association

Human Resources Liaison

Subcommittee on International Trade

Subcommittee on Water Management

620-6.1.1 National Governors' Bulletin

620-6.2 Western Governors' Conference

620-6.3 Republican Governors' Conference

620-6.4 Council of State Governments

620-6.5 Western Governors' Policy Office

620-7 Departments/Agencies

Agriculture

Forest Service

Army/Corps of Engineers



620-7

Commerce

(cont.)

Bureau of the Census

Economic Development Administration

Defense

Education

Energy

Bonneville Power Administration

Energy Regulatory Commission

Environmental Research and Development

Health and Human Services

Housing and Urban Development

Interior

Bureau of Land Management

Bureau of Reclamation

Indian Affairs

Justice

FBI

Law Enforcement Assistance Administration

Labor

State

Transportation (Coast Guard)

Treasury

IRS

620-8

Independent Agencies

Civil Aeronautics Board

Community Services Administration

Environmental Protection Agency

Equal Employment Opportunity Commission

620-8 Federal Trade Commission  
(cont.) General Services Administration  
Federal Property (Surplus)  
Interstate Commerce Commission  
Nuclear Regulatory Commission  
Office of Personnel Management  
Selective Service  
Small Business Administration  
U.S. Postal Service  
Veterans Administration

630 Regional

Pacific NW River Basins Commission  
NW Power Planning Council  
Western States Water Council  
Western Interstate Comm. for Higher Education (WICHE)

640 Interstate (Governor's Letters)

650 State

650-1 Executive  
650-2 Legislative/Legislature  
650-2.1 Lobbyists/Lobbying  
650-2.2 Proposed  
650-2.3 Bills, General  
650-2.3.1 Governor's Tax Plan  
650-2.4 Senate Bills  
Senate Joint Resolutions  
650-2.5 House Bills  
House Memorials  
House Joint Resolutions

650-2.7	Reapportionment
650-3	Judicial
650-3.1	Justice System
	Complaints
	Sentences
650-3.2	Statutes
	Administrative Procedures Act
	Gun Control
650-3.3	Courts (Criminal, Civil)
650-3.4	Legal Services, Judges (D.A., Bar)
650-3.5	Penal System
650-3.5.1	Paroles, Pardons, Probation
	Release Program
650-3.5.2	Prisoner Problems/Letters
650-3.5.3	Facilities
	Overcrowding
650-3.5.4	Community Corrections
650-3.6	Police
650-3.7	Crimes
	Compensation for Victims
	Crime Prevention
650-3.8	Capital Punishment
650-3.9	Citations
660	County, Tri-County (Commissioners)
670	City
	Mayors, City Managers
680	Indian Affairs

700 POLITICAL MATTERS

710 Partisan Matters

710-1 Democrat

710-2 Republican

710-3 Independent

720 National Politics

720-1 Issues

720-2 Campaigns

720-3 Elections

720-4 Candidates

Presidential

730 Statewide

730-1 Issues (Ballot Measures)

730-2 Campaigns

730-2.1 Expenses/Contributions

730-3 Elections

730-4 Candidates

740 Local

800 ECONOMIC DEVELOPMENT

810 Area Development — Oregon

810-1 Northern (Tri-County Area, Willamette Valley)

810-2 Eastern/Central (Bend, Burns, Ontario, The Dalles)

810-3 Southern

810-4 Western (Coastal)

Oregon Coastal Zone Management Assoc.

810-5 Statewide

811 Area Development — other than Oregon

- 812                    **Districts**
  - 812-1                **Water**
  - 812-2                **Sanitary**
  - 812-3                **Soil and Water Conservation**
- 813                    **Land Use**
  - 813-1                **Zoning**
  - 813-2                **Annexation**
  - 813-3                **Boundary Commissions**
  - 813-4                **Land Use Board of Appeals**
  - 813-5                **Forest Land Goals**
  - 813-6                **Rajneeshpuram (Antelope)**
- 814                    **Permits and Licenses**
  - Septic Tank/Solid Waste Disposal**
  - Mobile Homes**
  - Grain Inspectors/Inspections**
- 815                    **Rates and Tariffs**
  - 815-1                **Utility**
    - Lifeline Rates**
    - PGE**
    - PNB**
  - 815-2                **Carriers**
- 816                    **Disaster Control/Relief (Emergency Rescue)**
  - Floods**
- 820                    **Industrial Development/New Business**
  - 820-1                **Site Selection, Relocation, Development**
- 821                    **Small Business**
  - Oregon Development Corp.**

825	Trades/Industries
825-1	Building/Housing
	Architectural Barriers
	Codes
	Elderly/Low Income
	Inspections
825-1	Rent
	Subdivision/Developments
825-2	Agriculture/Farming
	Gypsy Moth
825-3	Lumber/Logging
825-4	Mining
825-5	Trucking
825-6	Fisheries Management
825-6.1	Commercial Management <i>Fishing</i>
825-6.2	Indian Fishing
825-7	Tourism
830	International Trade
840	Commodities — Export, Import
840-1	Log Export
	Coal
845	Ports
845-1	Port of Portland
845-2	Port of Coos Bay
845-3	Port of Astoria
	Tongue Point

900 TRANSPORTATION

- 902            **Research and Planning (Transfer Funds)**
- 903            **Highway System**
  - 903-1            **Maintenance**
  - 903-2            **Safety**
    - 903-2.1            **Lights**
    - 903-2.2            **Markers/Signs**
    - 903-2.3            **Rail Crossings**
    - 903-2.4            **Speeding**
      - Jordan Valley**
    - 903-2.5            **Drunk Driving**
    - 903-2.6            **Auto - Airbags/Seatbelts**
    - 903-2.7            **Motorcycles (helmets)**
  - 903-3            **Freeways**
    - I-5**
  - 903-4            **Highways**
  - 903-5            **Streets/Roads**
- 905            **Airports**
- 906            **Bridges**
- 907            **Waterways/Rivers (for transportation)**
  - 907-1            **Maintenance**
    - 907-1.1            **Dredging**
    - 907-1.2            **Navigable Waters**
- 908            **Railways**
  - 908-1            **Amtrak**
- 909            **Other Transportation Modes**

- 909-1            Mass Transit/Buses
  - Tri-Met
  - Lane Transit District
- 909-2            Rapid Transit/Light Rail
- 909-3            Aircraft/Airlines
- 909-4            Vessels

1000 HEALTH, EDUCATION AND WELFARE

- 1010            Health/Medical
  - 1010-1           Health Care/Insurance
    - Costs/Regulation
    - Medicare/Medicaid
  - 1010-2           Hospitals
    - Providence Hospital/Body Scanner
    - Veterans Hospital
  - 1010-3           Nursing Homes
    - Inspections
  - 1010-4           Disease
  - 1010-5           Drugs
    - 1010-5.1           Alcohol
    - 1010-5.2           Marijuana
    - 1010-5.3           Medications
  - 1010-6           Handicapped
    - 1010-6.1           Mental
    - 1010-6.2           Physical
  - 1010-7           Mental Health
    - 1010-7.1           Counseling
    - 1010-7.2           Delinquency



1010-7.3	Patient Letters
1010-8	Abortion
1010-10	Safety (other than traffic)
1010-11	Medical Fees
1010-11.1	Malpractice
1010-12	Nutrition
1010-13	Dental Care
1020	Education
1020-1	Programs
	Talented and Gifted
1020-2	Rehabilitation
1020-3	Funds/Scholarships
1030	Welfare
1030-1	Senior Citizens/Elderly
1030-1.1	Social Security
1030-1.2	Foster/Home Care
1030-1.3	Fixed and Low Income
1030-1.4	Project Independence
1030-2	Child Care
1030-2.1	Foster Care
1030-2.2	Custody
1030-2.3	Adoption
1030-2.4	Boys and Girls Aid Society
1030-2.5	Day Care Center
1030-2.5.1	Migrant Indian Coalition
1030-2.6	Child Support
1030-2.6.1	Child Support Payment Law

1030-3	Youth
1030-3.1	Student Program
1030-4	Population
1030-6	Veterans
	Jobs
	Loans
	Pensions
1030-7	Complaints/Assistance Requests
1030-8	Payments
1030-9	Disability
1030-10	Volunteers
1030-11	Aliens
1030-11.1	Naturalization
1030-12	Welfare Reform
1030-13	Food Stamp Program
1030-14	Family
1030-15	Oregon Food Share

1100 ECOLOGY/ENERGY

1110	Environment
	Pesticides/Herbicides
	Hazardous Materials/Waste Materials
1120	Pollution
1120-1	Air
	Backyard Burning
	Field Burning
1120-2	Water
1120-3	Noise

**1130 Water Resources (Scenic or Recreational)**

- 1130-1 Scenic Waterways**
  - 1130-1.1 Rogue River**
  - 1130-1.3 Columbia River Gorge**
  - 1130-1.4 Deschutes River**
- 1130-2 Reservoirs/Irrigation**
- 1130-3 Drought**
- 1130-4 Water Quality**
- 1130-5 Bay Estuaries**
- 1130-6 Dams**

**1140 Forest Resources**

- Reforestation**
- Timber Management**
- Small Woodlots**

**1150 Conservation/Preservation**

- 1150-1 Historical**
- 1150-2 Wildlife/Endangered Species**
  - 1150-2.1 Sanctuaries**
- 1150-3 Land**
  - 1150-3.1 Willamette Greenway**
  - 1150-3.2 Wilderness**

**RARE II**

- 1150-4 Recycling**
  - Bottles**

1160	Energy/Power
1160-1	Fuel
	Alternate Energy
	Wind
	Allocation Program
	Coal
	Consumption/Rationing
	Agency Reduction
	Costs
	Firewood/Woodcutting
1160-2	Solar
1160-3	Nuclear
1160-3.1	Facility Siting
1160-3.2	Safeguards (Nuclear Wastes)
1160-3.3	Nuclear Power Plants
	Trojan
1160-4	Geothermal
1160-5	Conservation
1160-6	Weatherization
1160-7	Regional Power Proposals
1160-8	Energy Policy
1160-9	Hydroelectric
1160-10	Natural Gas
1160-11	Energy Saving Ideas
1160-12	Energy Assistance Program

1500 GENERAL REFERENCE

1500	General Reference Files (Filed by Month)
1510	Recreation Activities
1510-1	Fishing
1510-2	Public Parks
1510-2.1	Campgrounds, Camping
	Fees
1510-2.2	Rest Areas
1510-3	Hunting
1510-5	Gambling
1510-5.1	Racing/Betting
1510-5.2	Lotteries
1510-6	Recreational Vehicles
1515	Licenses and Permits (other than Economic Development)
1515-1	Driving
1515-2	Hunting
1520	Economy
1520-1	Inflation/Recession/Economic Opportunity
1525	Inventions/Patents
1531	Animals/Pets
	Elk Herds
1532	Divorce
1533	Military/National Guard
1534	Consumer Problems
1535	Censorship
1537	Religion

1550	Transitory (90-day retention)
1550-1	Meeting Notices
1550-2	Newsletters, News Clippings
1550-3	Requests
1550-4	Questionnaires
1550-5	Unanswerable Letters (No name, no address, etc.)
1550-6	Copies of Letters

OFFICE OF THE GOVERNOR

STATE CAPITOL  
SALEM, OREGON 97310

TO: GOVERNOR VICTOR ATIYEH  
BOX 1  
1984 Correspondence  
101.1-4 - 111.7

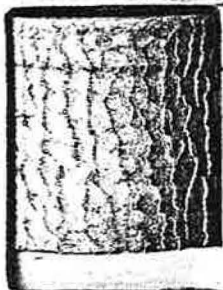
TO: GOVERNOR VICTOR ATIYEH  
BOX 2 - 1984 Correspondence  
111.8 - 113.5

GOVERNOR VICTOR ATIYEH  
BOX 3  
1984 Correspondence

BOX 4 - 1984 Correspondence

GOVERNOR VICTOR ATIYEH  
BOX 5 - 1984 Correspondence

BOX 6  
111-1 - 112-2  
1985 through 1986 Correspondence



TO: GOVERNOR VICTOR ATIYEH  
BOX 7  
113 - 208.2  
1985 through 1986 Correspondence

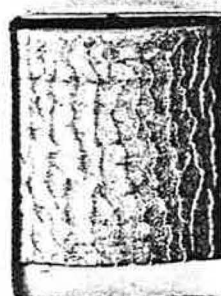
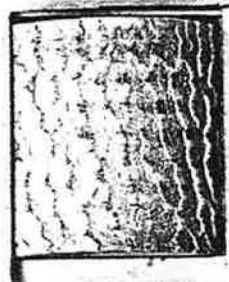
TO: GOVERNOR VICTOR ATIYEH  
BOX 8  
210 - 1 - 620-1  
1985 through 1986 Correspondence

BOX 9  
620-2 - 620-7  
1985 through 1986 Correspondence

BOX 10  
620-7 - 812  
1985 through 1986 Correspondence

BOX 11  
812-1 - 840  
1985 through 1986 Correspondence

BOX 12  
840 - 1 - 1010-5  
1985 through 1986 Correspondence





**OFFICE OF THE GOVERNOR**

STATE CAPITOL  
SALEM, OREGON 97310

---

**TO:** GOVERNOR VICTOR ATIYEH  
BOX 13  
1010-5.1.- 1150-3.2  
1985 through 1986 Correspondence

**OFFICE OF THE GOVERNOR**

STATE CAPITOL  
SALEM, OREGON 97310

---

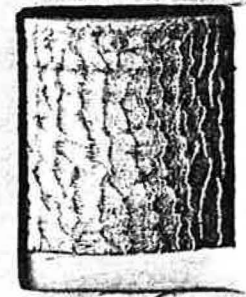
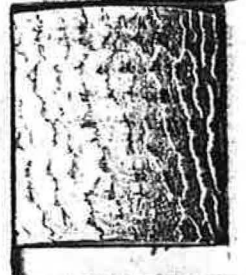
**TO:** GOVERNOR VICTOR ATIYEH  
BOX 14  
1150-3.2 - 1532  
1985 through 1986 Correspondence

**OFFICE OF THE GOVERNOR**

STATE CAPITOL  
SALEM, OREGON 97310

---

**TO:** GOVERNOR VICTOR ATIYEH  
BOX 15  
1533 - 1985 HOUSE SESSION  
1985 through 1986 Correspondence



**OFFICE OF THE GOVERNOR**

STATE CAPITOL  
SALEM, OREGON 97310

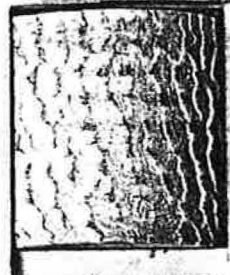
---

**TO:** GOVERNOR VICTOR ATIYEH

BOX 15

1533 - 1985 HOUSE SESSION

1985 through 1986 Correspondence



**OFFICE OF THE GOVERNOR**

STATE CAPITOL  
SALEM, OREGON 97310

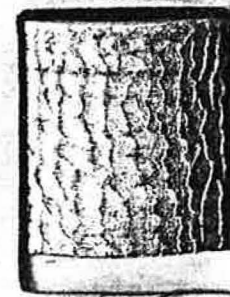
---

**TO:** GOVERNOR VICTOR ATIYEH

BOX 14

1150-3.2 - 1532

1985 through 1986 Correspondence





## RECORDS TRANSMITTAL TO THE OREGON STATE ARCHIVES

AGENCY: Governor's Office	FOR ARCHIVES USE ONLY	
	ACCESSION #	DATE REC'D.
	87A-1	
	DIVISION OR OFFICE:	RG #
	G4	BY <i>Jerry Roga</i>
	LOCATION:	

NO.	SERIES TITLE	SCHEDULE NO.	INCLUSIVE DATES	NO. OF CONTAINERS
1	Governor's Correspondence	OAR 166-40-060 (7)	1984-1987	19' ctns'
2	Correspondence-Affirmative Action	OAR 166-40-060 (7)	1983-1986	12 ctns
3	Correspondence - Communications	OAR 166-40-060 (7)	1979-1987	20 ctns
4	Correspondence - Citizens Representative - <i>remained in Gov's office per request by Pam Collins, Soldschmidt C.Rep. 1-9-87</i>	OAR 166-40-060 (7)	1986	10 ctns

TOTAL CONTAINERS 61 ctns  
61 cu. ft.

I hereby certify that the records described on this transmittal are to be sent to the Oregon State Archives and that the Archives staff will review these records and retain permanently any materials which possess legal, administrative, and/or historical value. Any material found not to be of value to the Archives will be (circle one) disposed of / returned to the agency by the Archives.

\_\_\_\_\_  
AGENCY HEAD SIGNATURE

\_\_\_\_\_  
DATE