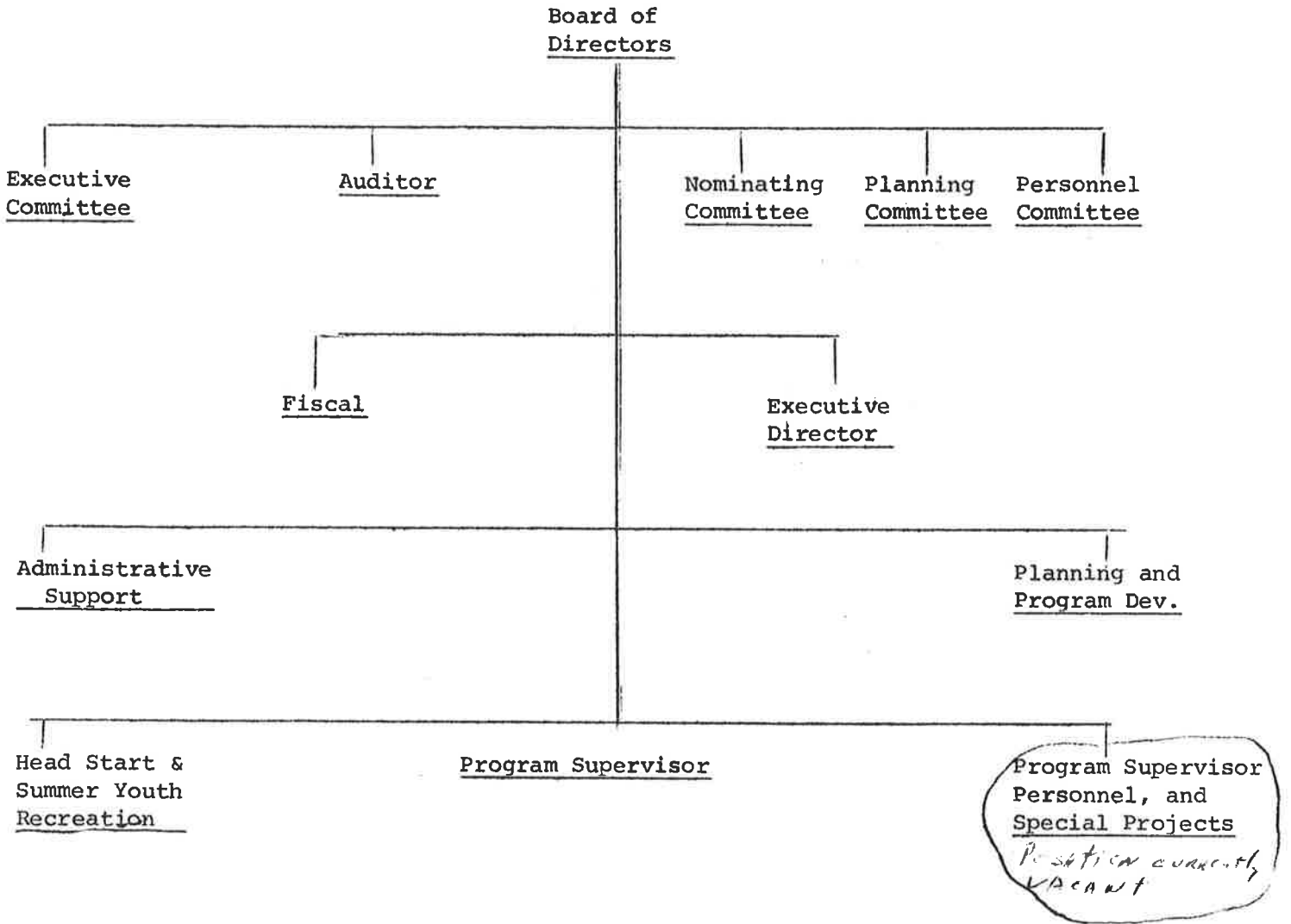


ORGANIZATIONAL CHART

WASHINGTON COUNTY COMMUNITY ACTION ORGANIZATION



FISCAL  
(1.6 persons)

COMPTROLLER



BOOKKEEPER

---

ADMINISTRATIVE SUPPORT  
(2 persons)

ADMINISTRATIVE  
SECRETARY



RECEPTIONIST

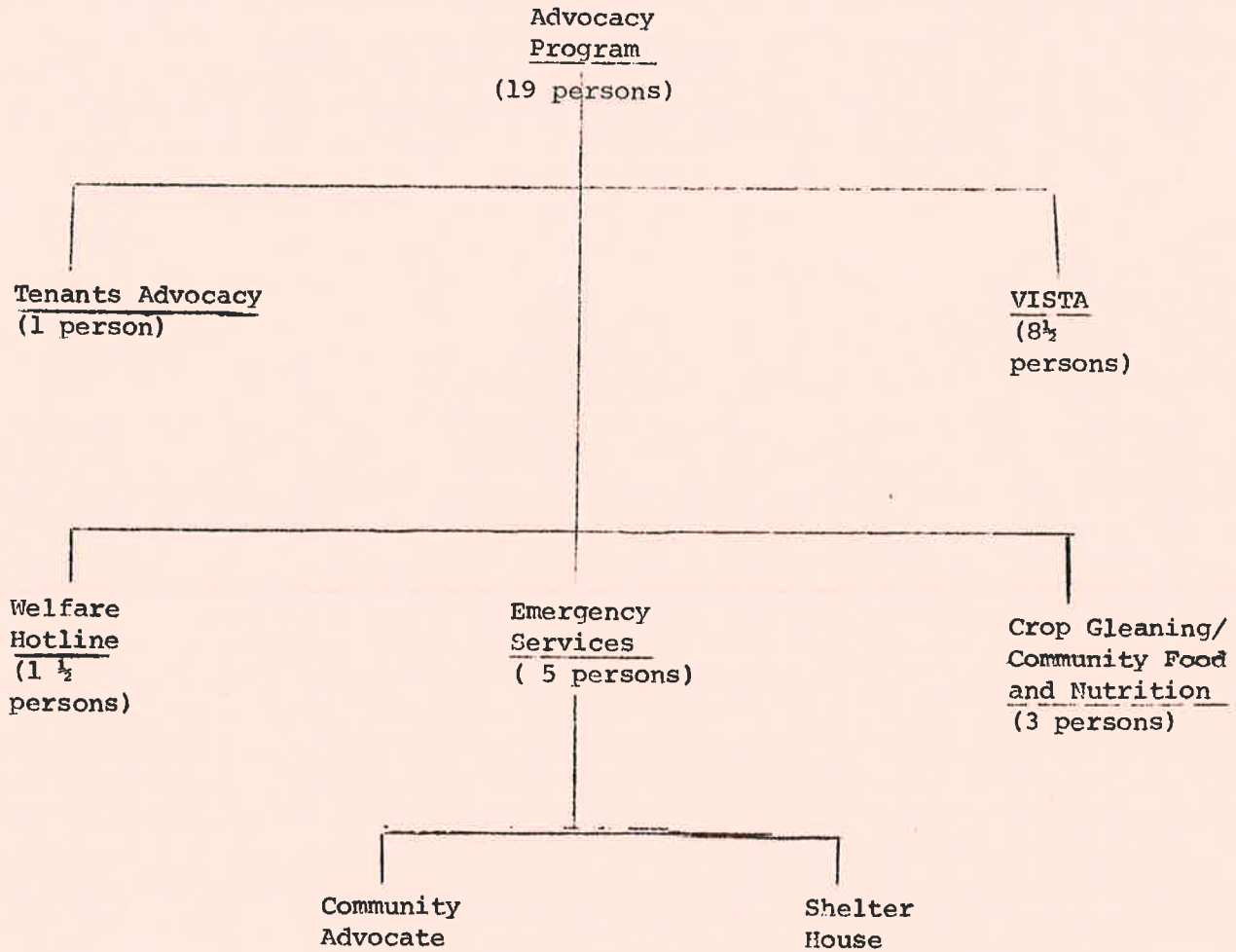
---

PLANNING AND  
PROGRAM DEVELOPMENT  
(2 persons)

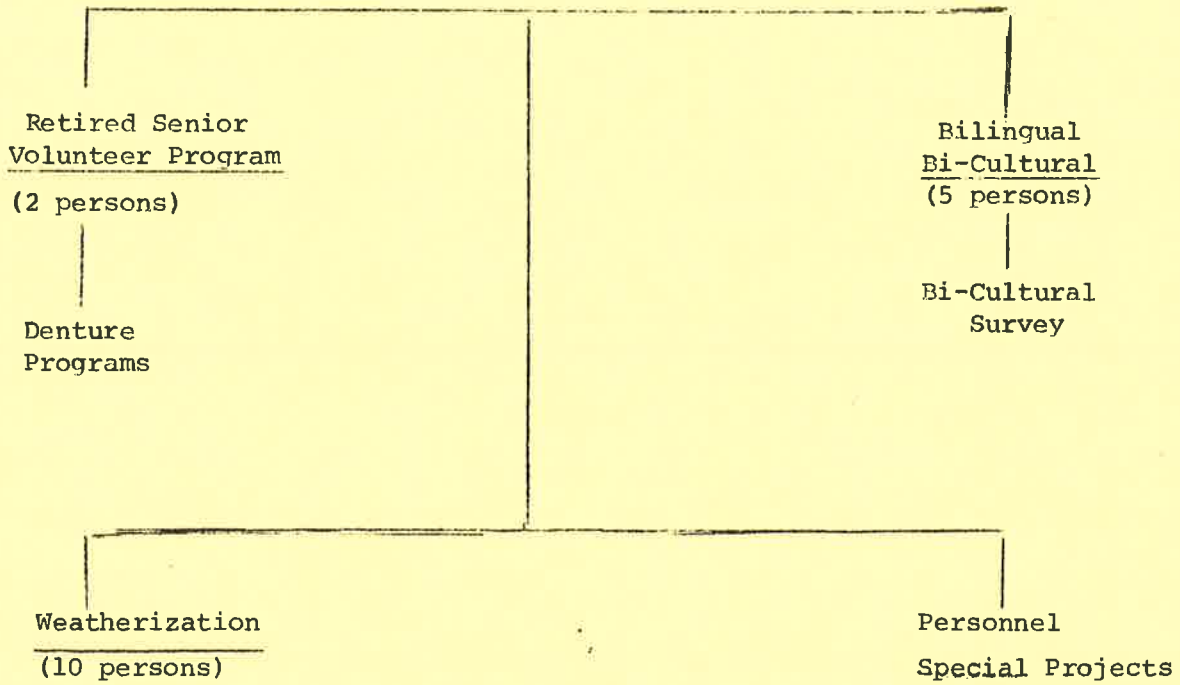
PLANNER/EVALUATOR  
(1 person)



MIGRANT HOUSING PLANNER  
(1 person)



SERVICES  
PROGRAM



GM/pk  
6/4/79

Rev. 8/79