

*It seems like Yesterday
... at Pacific*



A typical cheerleader's uniform before the turn of the century.



Even the girls believed in physical fitness.



The best looking football team in Pacific's history, the team of 1906.



Basketball champions of Non-conference colleges, 1911.



Bring your own chair.



Make it pretty, boys. Track team of 1906.



What a jump. Dr. Henry Bates looks on.

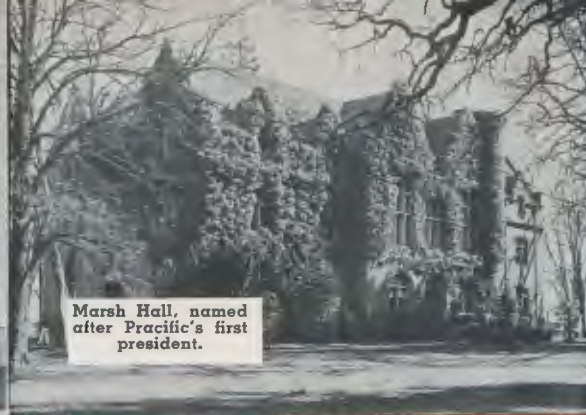


Hey fellows, look! ... a photographer.





The Badgers of 1910; how many do you know?



Marsh Hall, named after Pacific's first president.



Did you ever get caught telling her goodnight?

Built co



Traditional Frosh Sophomore battle. How many times did you get dunked?



We go through the Frosh reception line.



Wow! What a boxer fight.

Whether you were class of '97 or '51... those college years were wonderful!



Shrine Pearson



Present gym, built in 1910.



Sing it pretty, boys.



Homecoming bonfire.



A Z walk, still one of the most beautiful parts of the campus.



Old College Hall, built in 1850, now houses University museum.

Mayday, where are our former queens now?



Building the Homecoming bonfire. remember?



How many registration lines have you stood in?



Traditional Wassail party.



Football winners, 1951.

Some of the best times of your life were at **PACIFIC**

THERE are only a few of us "Badgers" who can remember the first Boxer flash . . . or the first gymnasium which was the finest in the Northwest. However, there isn't a member of the Pacific family who will ever forget the good times had while attending Pacific. Just a look at these pictures will bring back old memories and show how Pacific has grown in the last 100 years.

You and I . . . all of us . . . are a part of that growth which has made Pacific the wonderful place it is.



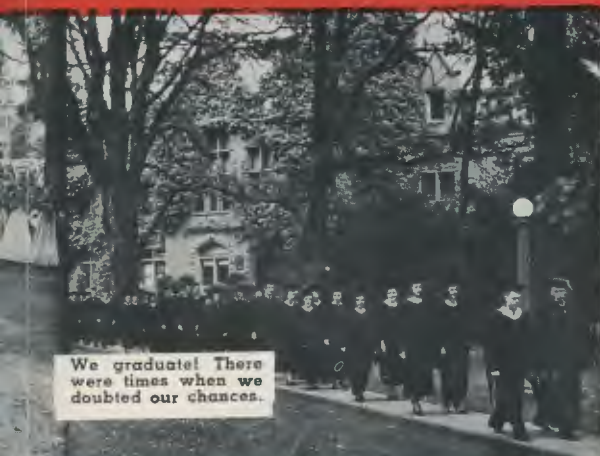
Remember those Noise parades?



We should never have left the room.



I've gotcha



We graduate! There were times when we doubted our chances.



3 generations of Staggs



Win that game

PACIFIC has "Gone to Town"



McCormick Hall, men's dormitory, addition built in 1947



Student Union Bldg. and University Bookstore, completed by students' finances in 1951.



Warner Hall, built in 1947.



Jefferson Hall, finished 1952, new Optometry Bldg.

We need YOUR HELP for a major project!

PACIFIC needs a new gymnasium. Our present gymnasium was built in 1910 and its present value is practically nil except as possibly an antique. One of Pacific's outstanding courses is in Physical Education, but our plant capacity is so limited that few prospective students in this field are interested in our University. The present space is even too small for the basketball spectators who would like to be present for our games.

Even though you find it impossible to return to Homecoming or any of the football or basketball games, we know you'll want to have a part in Pacific's future.

If the donations to a new gymnasium does not appeal to you, your money can be allocated to any fund that you desire merely by your statement of preference, whether that fund be: scholarship, general, a particular college within the university, etc.

How much should I give?

Whatever you feel like giving will be appreciated. You may make your contribution in one lump sum or in as many payments as you desire. For example, a \$100 gift can be paid at the rate of \$33.33 every four months over the period of a year or once a year over the period of three years, etc. Enclosed you will find a blank check and a pledge card; use whichever one you desire. Of course, you can deduct your contribution from Federal and State income taxes to the extent provided by law.



Drawing of proposed gymnasium.