



*SA*

acific niversity

# UNIVERSITY CENTER







*Infirmery convalescent room*

The new infirmary in the east end of the Student Center has increased facilities for outpatient care, and can comfortably accommodate up to 12 bed patients in six separate rooms. Two examination rooms provide complete medical facilities for the two Forest Grove physicians who are on hand at 5:45 p.m. daily for "sick call." Other staff members include a registered nurse, who is present eight hours a day and on 24-hour call, a full-time practical nurse, and a full-time nurse's aid.



*Student conference room or Private Dining*



*Pacific University*

*For information on how you may use Washburne Hall for your meetings, write:*

**George Horner, Director  
Washburne Hall, Pacific University  
Forest Grove, Oregon 97116**



*Mark O. Hatfield, Governor, State of Oregon*

Oregon's private universities and colleges play a vital role in higher education, but they must play an even more vital role in the future as the state's college-age population increases. Washburne Hall typifies the economy of adding new buildings while retaining the historical flavor of its near neighbor, Old College Hall. Pacific University is to be congratulated on the work and vision of its officials in making such a student center possible.

A handwritten signature in red ink, which appears to read "Mark O. Hatfield". The signature is written in a cursive style.

Mark O. Hatfield  
Governor

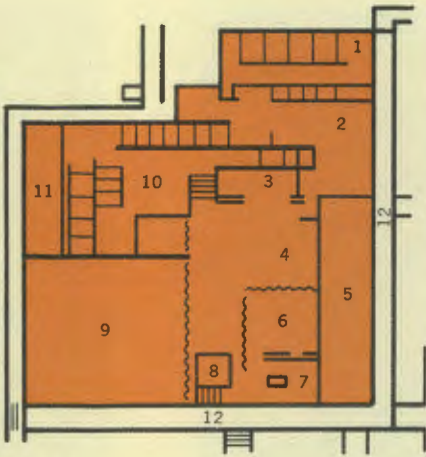
**A Student Cent**





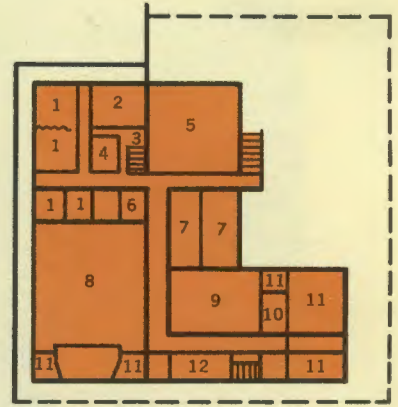
er with all the facilities for building minds to





### GROUND LEVEL

1. Infirmary
2. Bookstore
3. Snack Bar
4. Coffee Shop
5. Patio
6. Lounge
7. Post Office
8. Mgr. Office
9. Main Commons
10. Kitchen
11. Private Din. Rm.
12. Covered Walkway



### LOWER LEVEL

1. Meeting Room
2. Publications
3. Darkroom
4. Assoc. Students
5. Mech. Space
6. Serv. Kitchen
7. Lounges
8. Multi-Purpose
9. Recreation
10. Card Room
11. Storage
12. Art Room

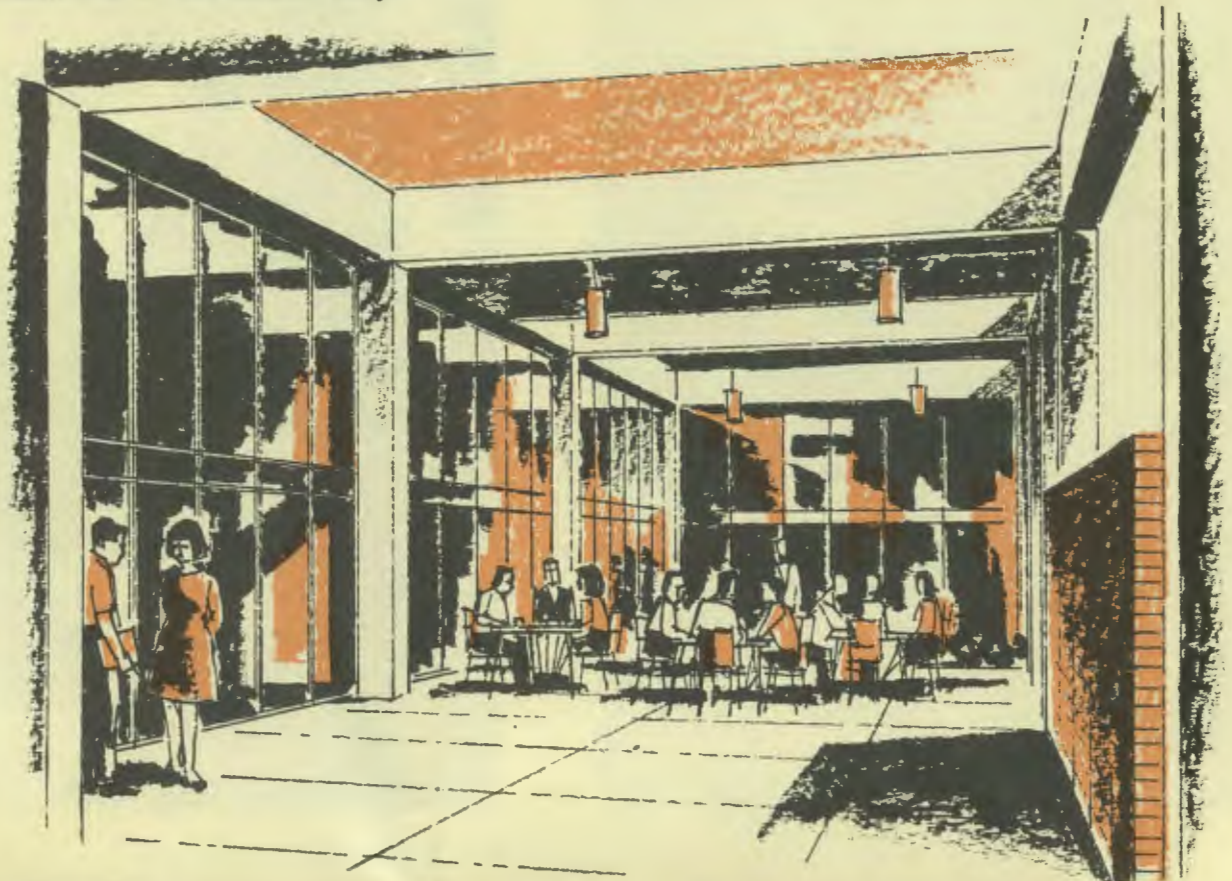
WASHBURNE HALL, Pacific University's new \$1 million student center, was created to fill a long-felt need for accommodations for non-academic activities of its student body and faculty. Located immediately to the east of Walter Hall, the new center concentrates in one convenient location facilities for dining rooms, coffee shop, book store, postal center, ballroom-auditorium, recreation area, infirmary, lounge and meeting rooms. Of necessity, the building is large. Its two floors occupy 57,000 square feet. Its various facilities were designed with an eye to the future, so that the building will be just as functional when enrollment reaches 1,500, the optimum established by the Board of Trustees. Washburne Hall was financed through a federal government loan of \$925,000. Equipment and furnishings brought investment to more than \$1 million.

**meet America's needs**



## acific's new Student Center...

WASHBURNE HALL is more than just a college center . . . it is also a community center for many activities of Forest Grove and surrounding area. Its easily-accessible location has made it a popular place for luncheons and dinners for such groups as the Chamber of Commerce, Forest Grove Rotary Club and Forest Grove Kiwanis Club. Hobby groups meet regularly; the Forest Grove Gleemen and Girls present concerts in the large multi-purpose room, which also takes care of the regular student assembly programs. Other groups such as church-related organizations and the YMCA have discovered the convenience of the center for week-long conferences. The building has handled as many as 800 high school students for a two-day speech tournament without disrupting the regular schedule established for the student body.



## Central Lounge...





## Student Book Store...





## Main Dining Room...



WASHBURNE HALL was named for the late Mr. and Mrs. Carl G. Washburne, Eugene, long-time friends of the University. Mrs. Washburne in her will provided the University with a scholarship trust fund in excess of \$1 million. Although these funds were not used in the construction or furnishing of the building, the Board of Trustees felt the name an appropriate one.

George Horner, director of the center, heads a total of 26 full-time employes in Washburne Hall. In addition, there are 20 students engaged regularly in part-time work, mostly in the cafeteria. The center averages about 60 private luncheons and dinners per month, half of these for organizations not connected with the University. Meetings average 250 per month.

The Student Center has five areas for serving meals: the main dining room which can seat 800; three separate dining rooms adjacent for private meetings; and the large multi-purpose room on the lower level, which can accommodate 350 for a banquet. The central kitchen on the main floor serves the lower level by means of a dumb-waiter. The snack bar provides short-order service and coffee-break snacks, averaging over 600 sales daily.

The postal center provides mail deliveries for the entire university through a bank of postal boxes, eliminating the deliveries to the individual offices and dormitories. Most recent addition to the services is a row of coin lockers on the lower level for use by students or visitors to the campus who may wish to store some of their belongings temporarily.

The book store has three times as much space as available before. Shelf space and storage space are greatly increased and sales are up 20% over last year. Over 2,000 titles are available, 25% of these required for class reading. The remainder, largely paperbacks, are topics for supplementary reading, and form the largest collection in Washington County for selection by residents as well as students.

The center is proud of a handsome Baldwin concert piano, gift of anonymous donor in memory of Frank Thomas Chapman and Pauline Miller Chapman.

The building is complete with the latest in sound equipment, including tape recorders, a room for film projection and a public address system with "over-ride" for paging and announcements.

The lower level contains a popular recreation room with billiard table and ping-pong tables. Equipment rents for a modest fee. The journalism department maintains student publications offices and a complete darkroom. A card room, occasionally used for study, gets frequent use. An alumni meeting room was furnished by the class of 1913 as their 50th reunion gift to the University. Student body offices are on this floor.





*Auditorium and Meeting Hall*



*Billiard Parlor*



*Mail Office*



*Kitchen*